

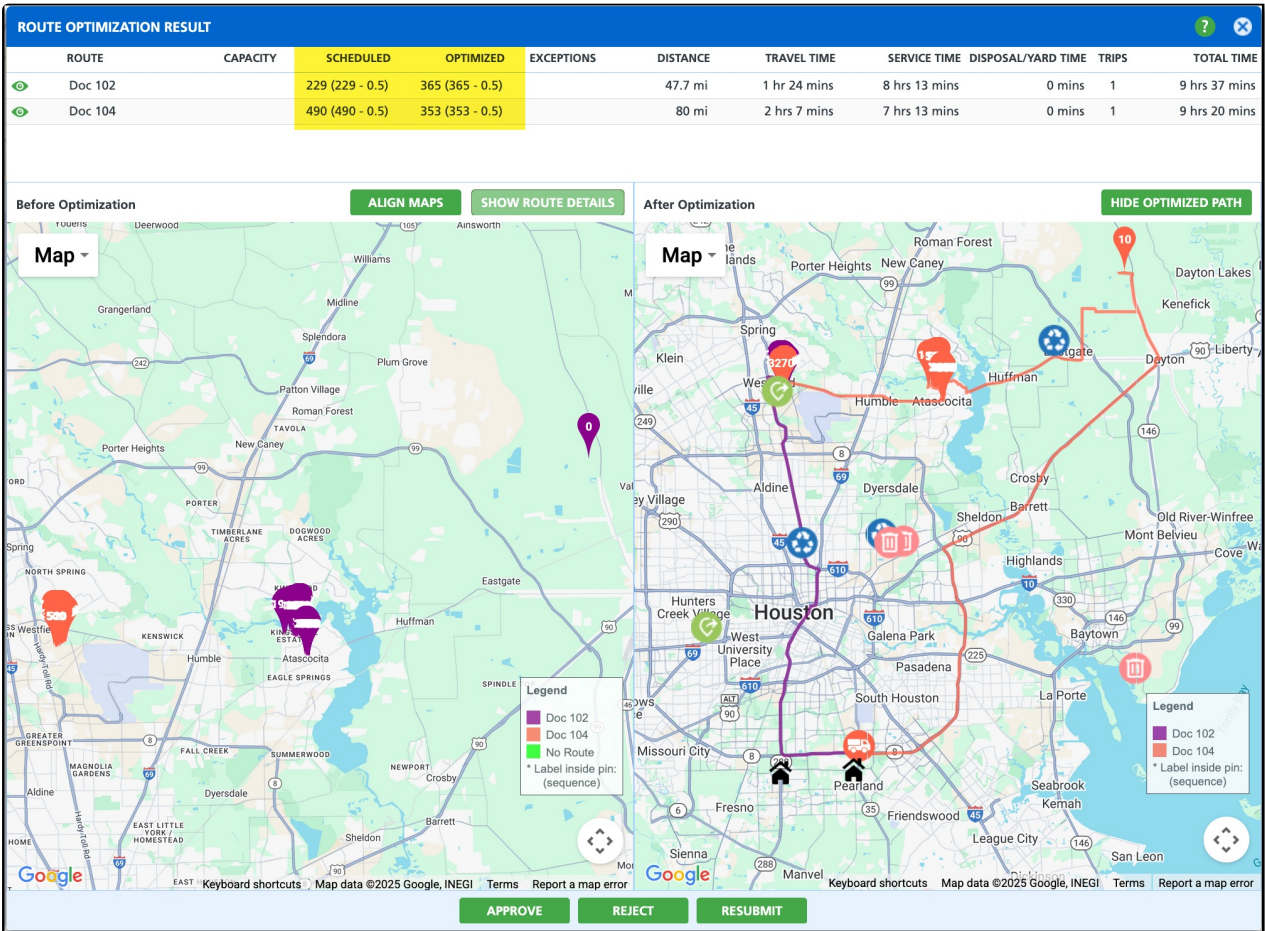
Improve Operations with Route Optimization

Last Modified on 11/21/2025 11:27 am PST

The Route Optimization feature is available throughout Navusoft's routing tools in Dispatch, Route Management, and NavuNav (Android available in version 6.6). When enabled and properly configured, Route Optimization automatically balances stops across routes, sequences stops within a route, and inserts unsequenced stops using advanced algorithms that consider factors such as distance, service time, and business hours. This streamlines route planning, reduces drive time, and enhances overall operational efficiency.



Route Optimization is a licensed feature powered by RouteSmart, a third-party system. While RouteSmart provides the optimization engine, all setup and configuration are handled within Navusoft.



This example uses data from a test database. Actual results may vary based on your system's data and configuration.

Route Sequencing Comparison Chart

The following table compares the sequencing methods available in Navusoft, summarizing the benefits and key differences between each option.

Method	How It Works	Advantages	Limitations
--------	--------------	------------	-------------

Route Optimization	Uses advanced technology to automatically determine the most efficient stop sequence based on location data, time windows, and other routing parameters.	<ul style="list-style-type: none"> - Maximize route efficiency - Reduces drive time and fuel costs - Balances workloads across routes - Adapts quickly to route or customer changes 	<ul style="list-style-type: none"> - Requires Route Optimization add-on - Initial configuration setup
Manual Sequencing	Routes are arranged manually by dispatchers or managers based on their experience or customer order.	<ul style="list-style-type: none"> - Allows for personal judgement and local knowledge - Core feature, no additional software required 	<ul style="list-style-type: none"> - Time-consuming and prone to human error - Difficult to maintain as customer base grows - Limited visibility into true route efficiency
Driver-Completed Order	The sequence is determined by the order in which the driver completes stops during a route.	<ul style="list-style-type: none"> - Simple and automatic - Reflects real-world driving behavior - Core feature, no additional software required 	<ul style="list-style-type: none"> - May not be efficient or repeatable - Inconsistent between drivers - Does not account for optimized travel paths or time windows

Next Steps

For questions, demo requests, setup, or licensing related to this add-on feature, please contact Navusoft Support.