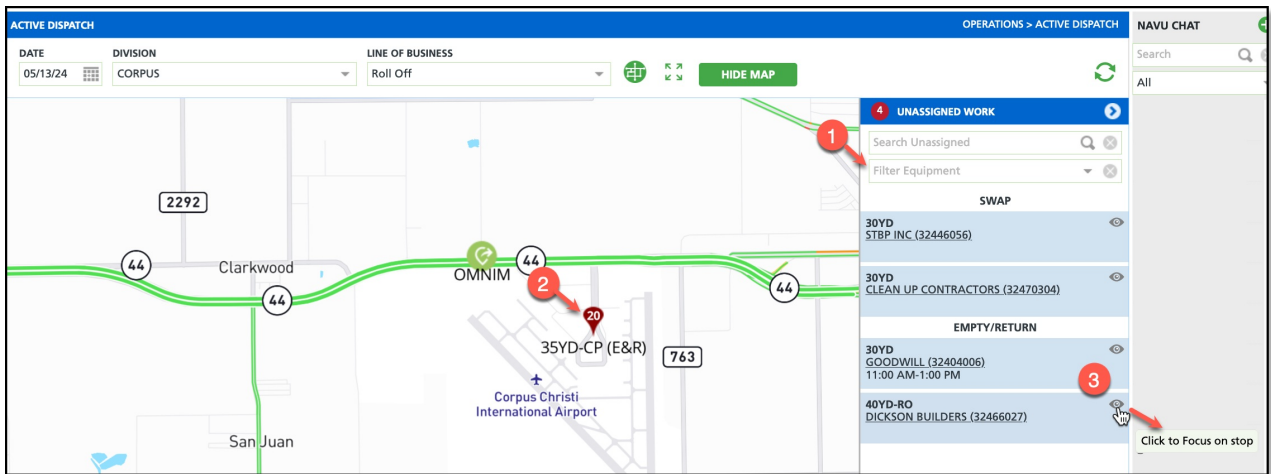


# Active Dispatch (Operations) - Screen Enhancements (16188, 16621) [Enhancement]

Last Modified on 05/14/2024 10:58 am EDT

The following screen improvements have been applied to the Active Dispatch screen:

1. A Filter Equipment option has been added to further filter the Unassigned Work column.
2. The stop's sequence number displays inside the location pin (only for route assigned stops).
3. A toggle button has been added allow the user to "focus" on a specific unassigned stop. When selected, all other stops (assigned and unassigned) are hidden.



Pathway: *Operations > Active Dispatch*