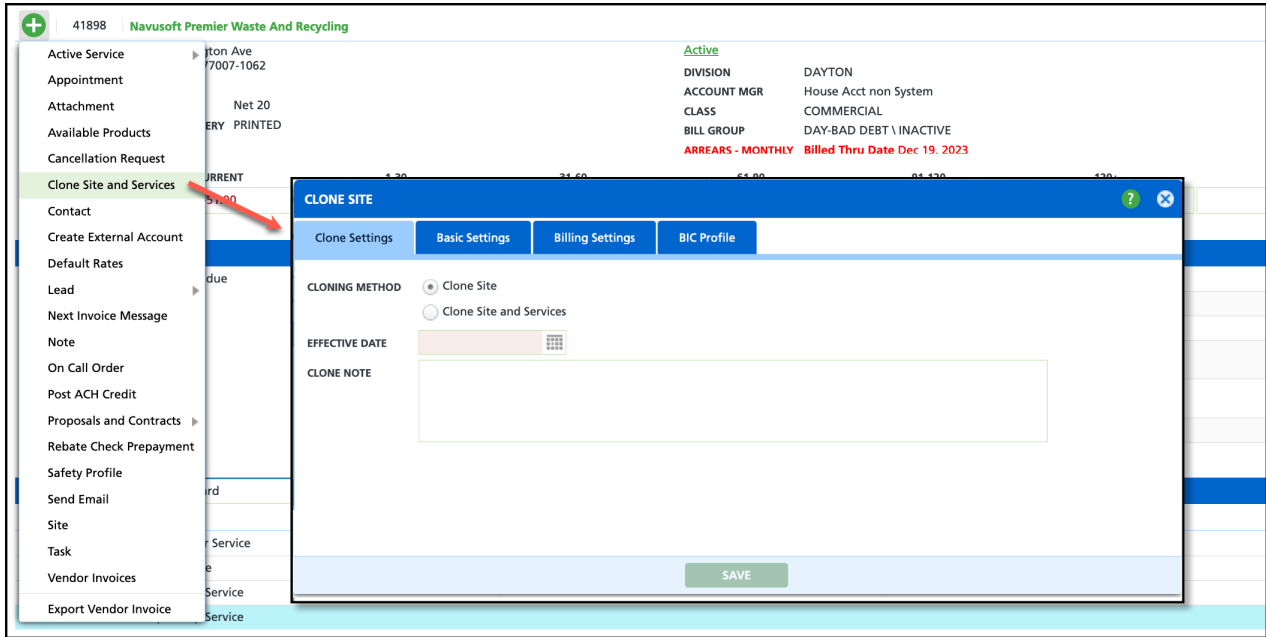


Clone Site and Services - New Feature Available in Account Menu (16270) [Enhancement]

Last Modified on 02/05/2024 3:22 pm EST

A new "Clone Site and Services" feature has been introduced in the Account menu. This feature simplifies the process of adding new sites by replicating existing site configurations and their associated services with just a few clicks. For more information about this tool, please refer to the article linked below.



Pathway: Accounts > + Menu > Clone Site and Services

Article Link: [Clone Site and Services](#)