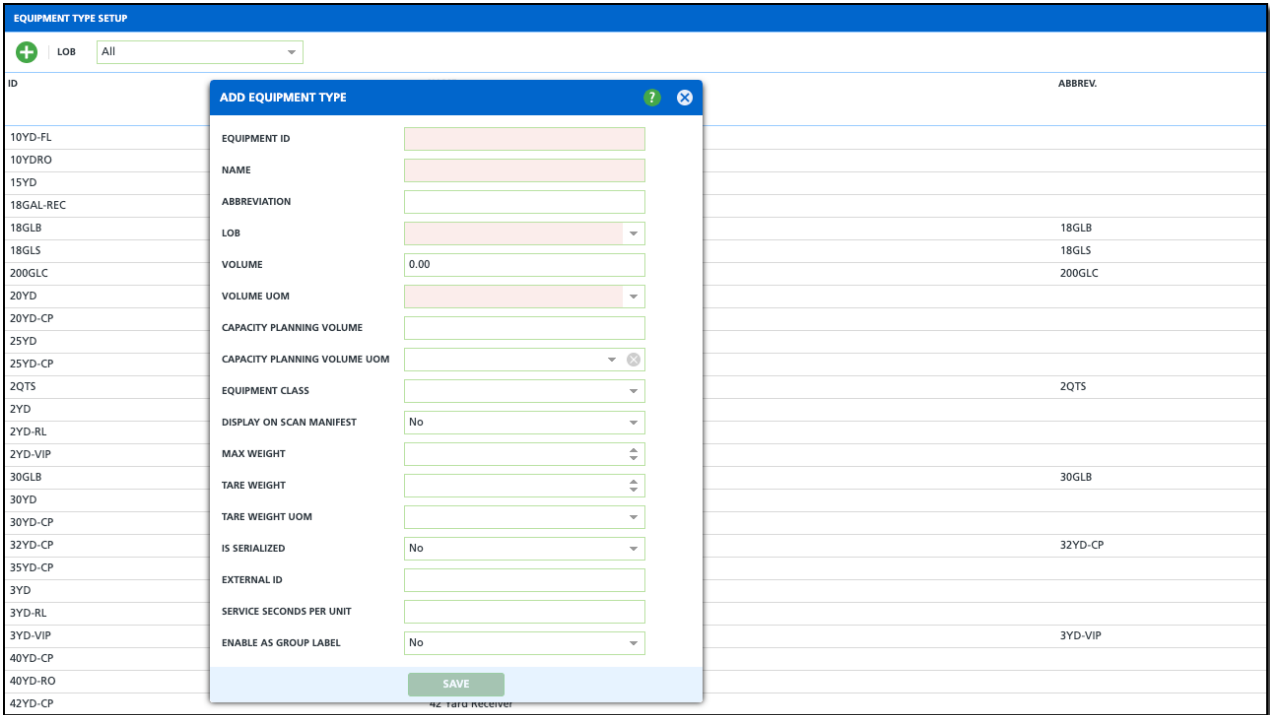


Equipment Type Setup

Last Modified on 01/12/2026 12:20 pm PST


Pathway: Setup > Services > Equipment Type

For each type of equipment services may include, an Equipment Type record must exist. Equipment types are specific to the Line of Business they are assigned and display in multiple locations including the work order.



Equipment Type Setup Field Descriptions

Field	Description
Equipment ID <i>Required</i>	The identification for the equipment that displays on the work order.
Name <i>Required</i>	The name of the equipment that displays in service drop downs and on the work order.
Abbreviation	The abbreviation for the equipment type.
LOB <i>Required</i>	The Line of Business the equipment is assigned to. The equipment will only be available to services of the selected line of business.
Volume	The volume of material the equipment can hold.
Volume UOM <i>Required</i>	The unit of measure the equipment's volume is measured by.

Capacity Planning Volume	<p>The equipment's volume capacity, utilized during route optimization to estimate when disposal trips are to be required in a route optimization plan. The capacity planning volume and unit of measure need to match that of the truck.</p> <p> If route optimization is set up in your system, the Capacity Planning Volume entered here must match the truck's Volume Capacity in Truck Setup; otherwise, optimization will fail.</p> <p><i>*Used by Route Optimization</i></p>
Capacity Planning Volume UOM	<p>The Unit of Measure used to measure the capacity volume.</p> <p><i>*Used by Route Optimization</i></p>
Equipment Class	The classification of the equipment type.
Display On Scan Manifest	
Max Weight	Identifies the maximum weight the equipment can hold.
Tare Weight	The weight of the container when empty.
Tare Weight UOM	The unit of measure used to calculate the tare weight.
Is Serialized	Indicates if the equipment type has a serial number for inventory tracking.
External ID	The external Identification used for the equipment type.
Service Seconds Per Unit	Enter the average amount of time (in seconds) it takes to collect one unit of equipment.
Enable As Group Label	Enable to group the weight for Navunav Manifest Scanning.

Add Equipment Type

1. Select the green '+' icon to open the **Add Equipment Type** editor.
 2. Complete the following required fields:
 - o Enter an **Equipment ID** for the equipment type.
 - o Enter a **Name** for the equipment.
 - o Select the **Line Of Business** the equipment is assigned to.
 - o Select the **Volume UOM**.
 3. Complete additional fields based on your company's setup requirements.
 4. Click **Save** when finished.
-